

## **Sustainable Redevelopment for the USA's Poorest Community**

The Crow Creek Dakota Reservation in South Dakota is statistically the poorest community in the USA. After serving in WWII, Vern Ashley was elected their first Tribal Chairman (46-54). As he nears 100 years of age, Vern continues as a passionate advocate of change. While serving as South Dakota Commissioner of Indian Affairs during the 1970's, Mr. Ashley conceptualized a sustainable housing development for Crow Creek. The U.S. Army Corps of Engineers had flooded & destroyed his entire community in the 1950s to make way for Big Bend Dam on the Missouri River, and Govt. failed to support its promised redevelopment, in spite of Mr. Ashley's repeated appeals to the Bureau of Indian Affairs and to Congress.

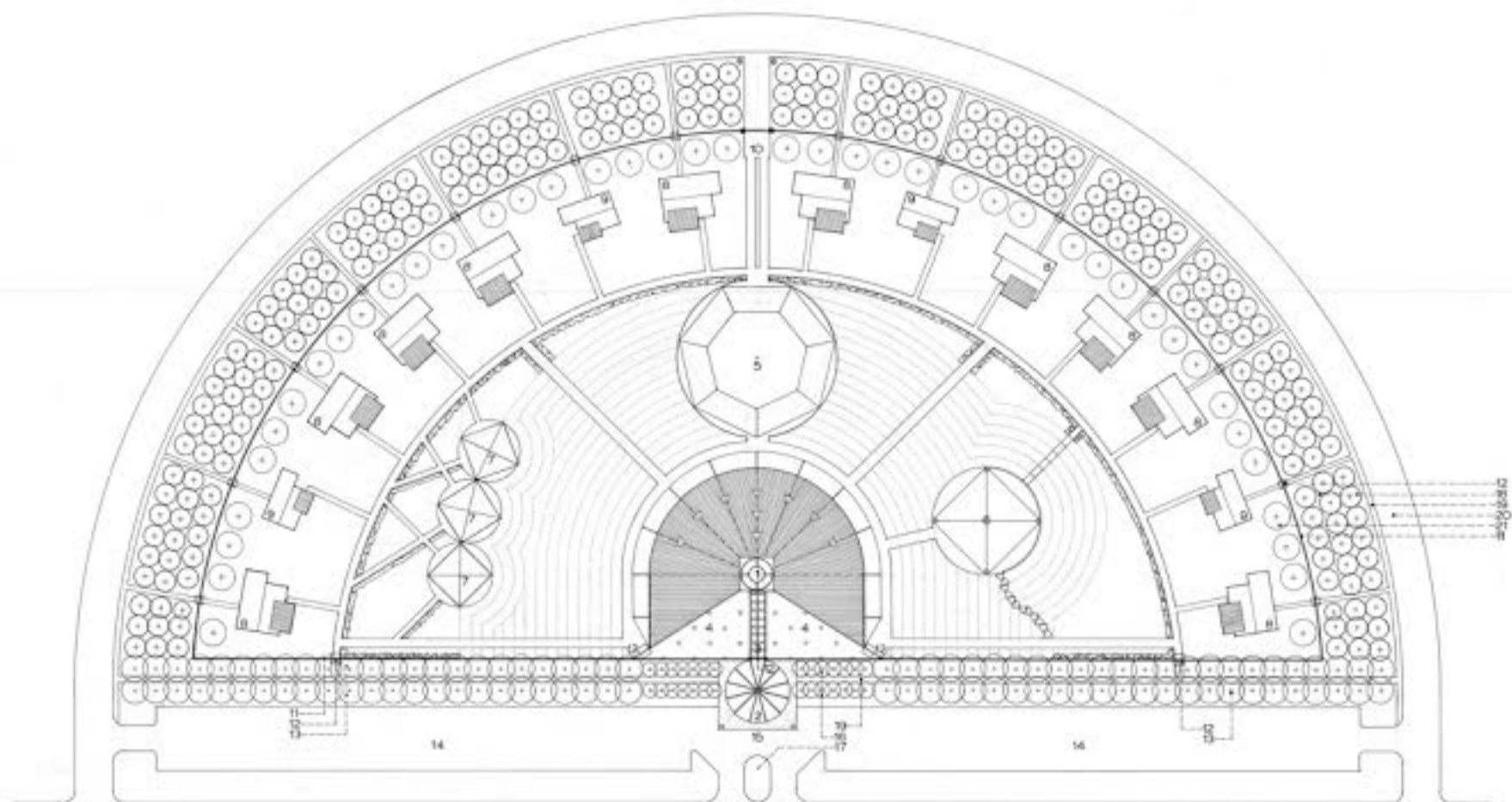
Mr. Ashley's housing development was christened "Ici Mani Lodge" (Dakota for "a place for bringing people together"), and designed with the aid of his architect son, Wallace Ashley (diagram attached). It envisioned a culturally & environmentally sustainable village including cottages, landscaped walking paths, community lodge, pavilions and ceremonial grounds. A volunteer team facilitated by the Diversity Foundation has built upon Vern's concept to envision a modern community also incorporating "renewable" energy, including solar, wind and geothermal, with priority housing for elders, veterans, teachers and health workers, incorporating a fish farm (aquaculture, hydroponics and greenhouses). A nearby large community center will include gym & fitness center, tribal cafeteria & auditorium, elder & youth centers, hospital, an Artist Village & other economic development projects. This model also builds upon Thunder Valley's master plan under development at Pine Ridge.

Potential collaborators that have expressed interest in the Crow Creek redevelopment include representatives of the USMC & Army Engineers (Military-Civilian IRT Grant) Habitat for Humanity, Minnesota and U.S. Departments of Agriculture, Univ's of Minn & So. Dakota, various American Indian Organizations, Tribal and Technical Colleges, along with other private and public corporations including the U.S. Department of Veterans Affairs in view of the number of homeless veterans at Crow Creek. All hold the prospect of financial support.

Over past 2 decades, The Diversity Foundation has been involved with filming elders & various Native American "Reconciliation & Outreach" programs across southern Minnesota (ie Winona, Mankato, Rochester, Pipestone etc) and majority Dakota/Lakota Reservations across Great Plains & Canada. These efforts support other past & ongoing initiatives including the "Year of Reconciliation" declared by Minnesota Gov. Rudy Perpich in 1987 and by South Dakota Gov. George Mickelson in 1990, followed by Gov. Mark Dayton's Dakota Apology & Day of Remembrance & Reconciliation read by Secretary of State Mark Ritchie in a ceremony at Pipestone in 2012. Gov. Dayton and Mr. Ritchie have both asserted strong interest in our work, as well as several other prominent Minnesota leaders in both political parties. (See Attachments & DF Website "Promo" at [www.diversityfoundation.org](http://www.diversityfoundation.org) )

An immediate Diversity Foundation objective is production of a film & book about Mr. Ashley's Incredible life's story, which could greatly broaden awareness & support for the redevelopment of Crow Creek. Award Winning Filmmakers, Writers & Producers have been identified and preliminary funding is now being sought.

See Vern's original "ICI MANI" village design below.



## SITE MASTERPLAN

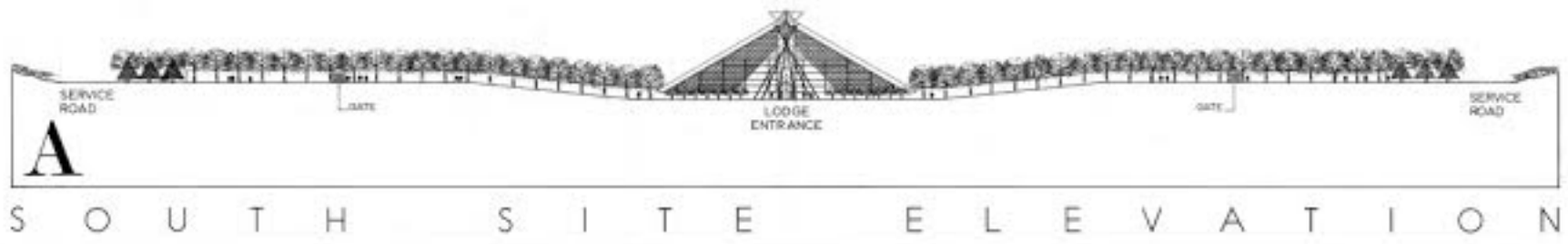
### LEGEND:

- |                         |                               |                                   |
|-------------------------|-------------------------------|-----------------------------------|
| 1 - I'ÖI MANI LODGE     | 8 - 2 BORN COTTAGE            | 15 - PICK-UP/DROP-OFF             |
| 2 - TPI ENTRY           | 9 - 1 BORN COTTAGE            | 16 - WILD BERRY BUSHES (ASSORTED) |
| 3 - GLASS ENTRY PASSAGE | 10 - SERVICE DRIVEWAY         | 17 - FLAGPOLE                     |
| 4 - COURTYARD           | 11 - 10 FT WOOD FENCE         | 18 - EVERGREEN WIND BUFFER        |
| 5 - CELEBRATION GROUNDS | 12 - 10 FT                    | 19 - WALKING PATH                 |
| 6 - MATCH BRUSH         | 13 - SEASONAL TREES           | 20 - SERVICE ROAD                 |
| 7 - MINOR PAVILION      | 14 - RESIDENT/VISITOR PARKING | 21 - FRUIT TREE BELT              |

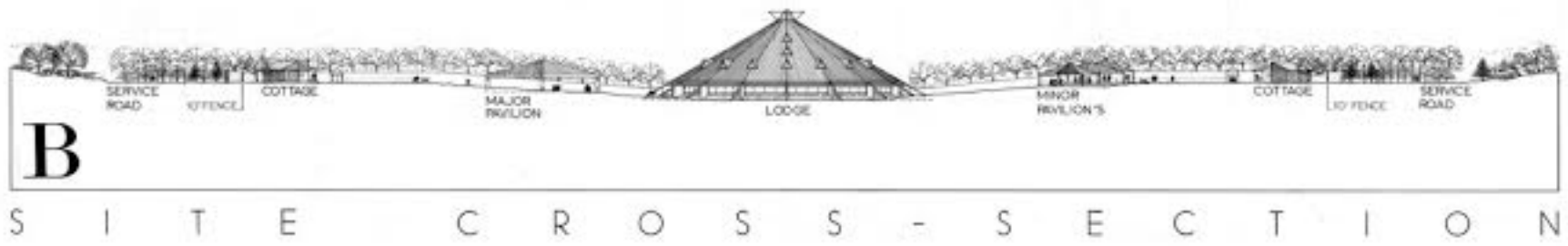
# I'ÖI MANI LODGE

SINAPPE - Architects & Planners  
 2723 East Avenue SE  
 Albuquerque, New Mexico 87106  
 P (505) 264-9055, W (505) 264-3866

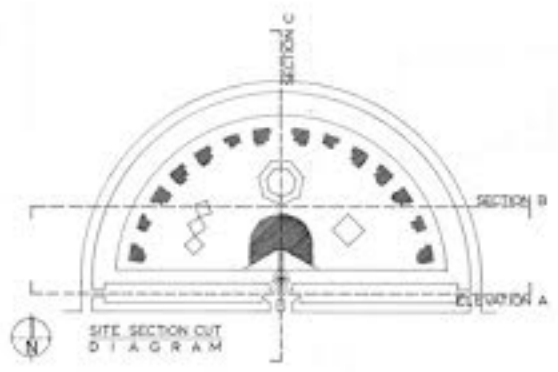
RED FEATHER CORP.  
 PO BOX 100  
 PERM, SOUTH DAKOTA 57501  
 P (605) 228-5400



S O U T H S I T E E L E V A T I O N



S I T E C R O S S - S E C T I O N



S I T E S E C T I O N

# I Ü I M A N I L O D G E